

8 mill

12th LIGHTHOUSE DISTRICT.

LIGHTHOUSE:  
POINT PINOS,  
CAL.

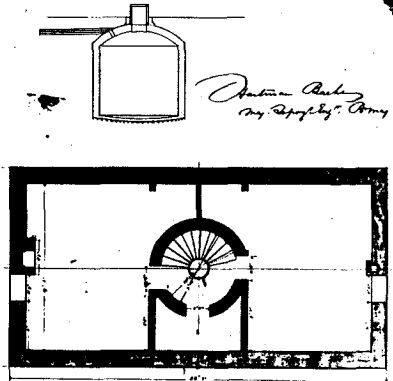
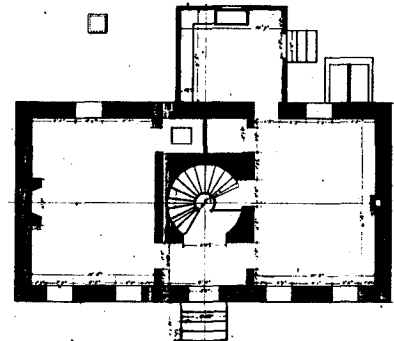
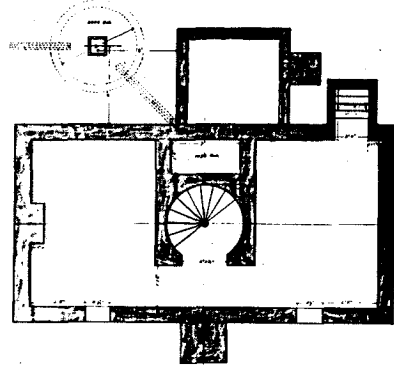
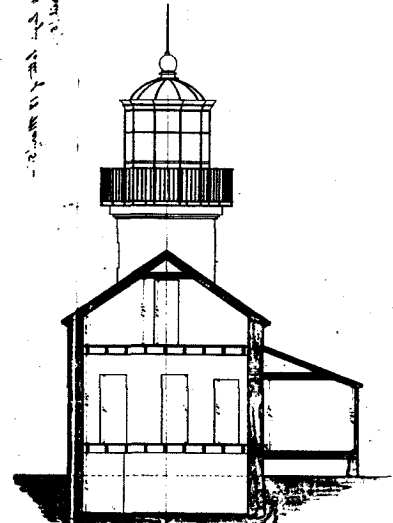
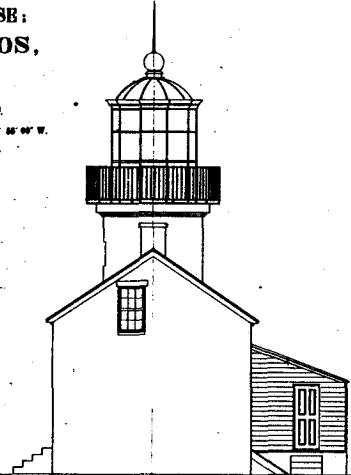
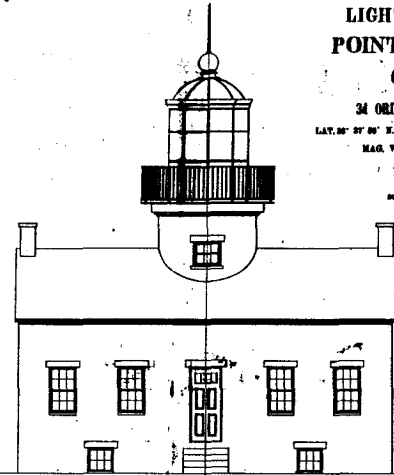
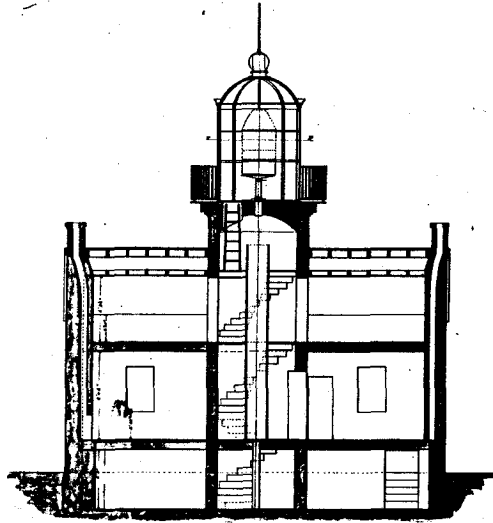
34 ORDER FIXED.

LAT. 36° 27' 00" N. LONG. 121° 46' 00" W.  
MAG. VAR. 10' 30" E.

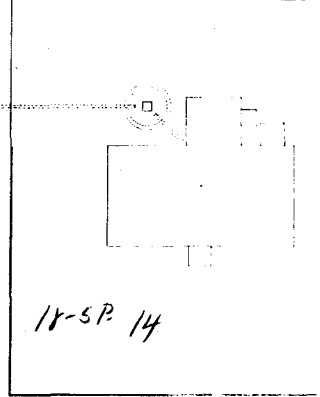
1854.

SCALE.

1 B  
19th Dec  
for Mr. [unclear]  
at [unclear]



*Order Book  
my Supply Army*



18-5P 14

12<sup>th</sup> Dist. 1 P.  
with Copy etc. of 13<sup>th</sup> Mar. 55.  
Feb 22 April

1266P